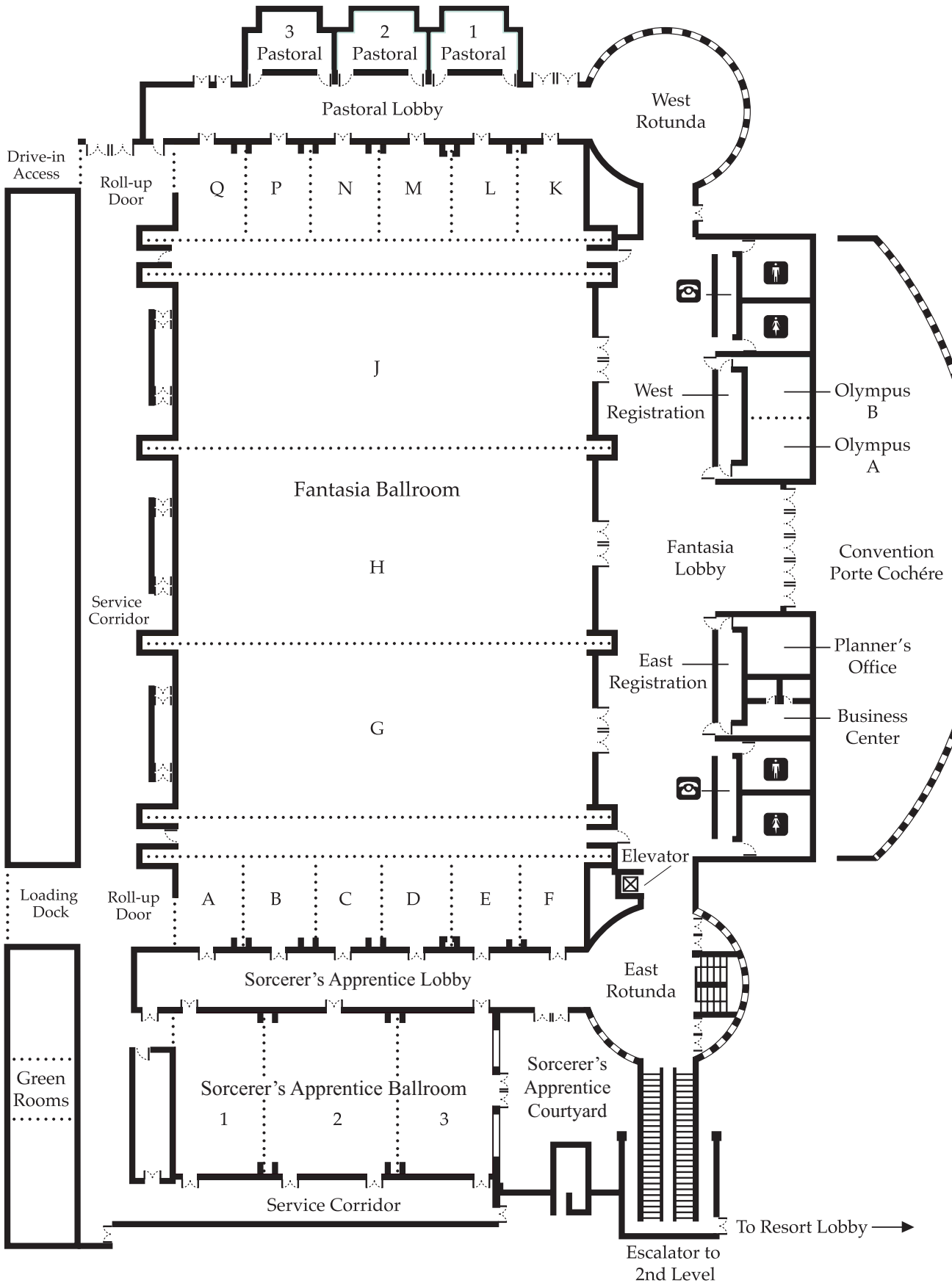


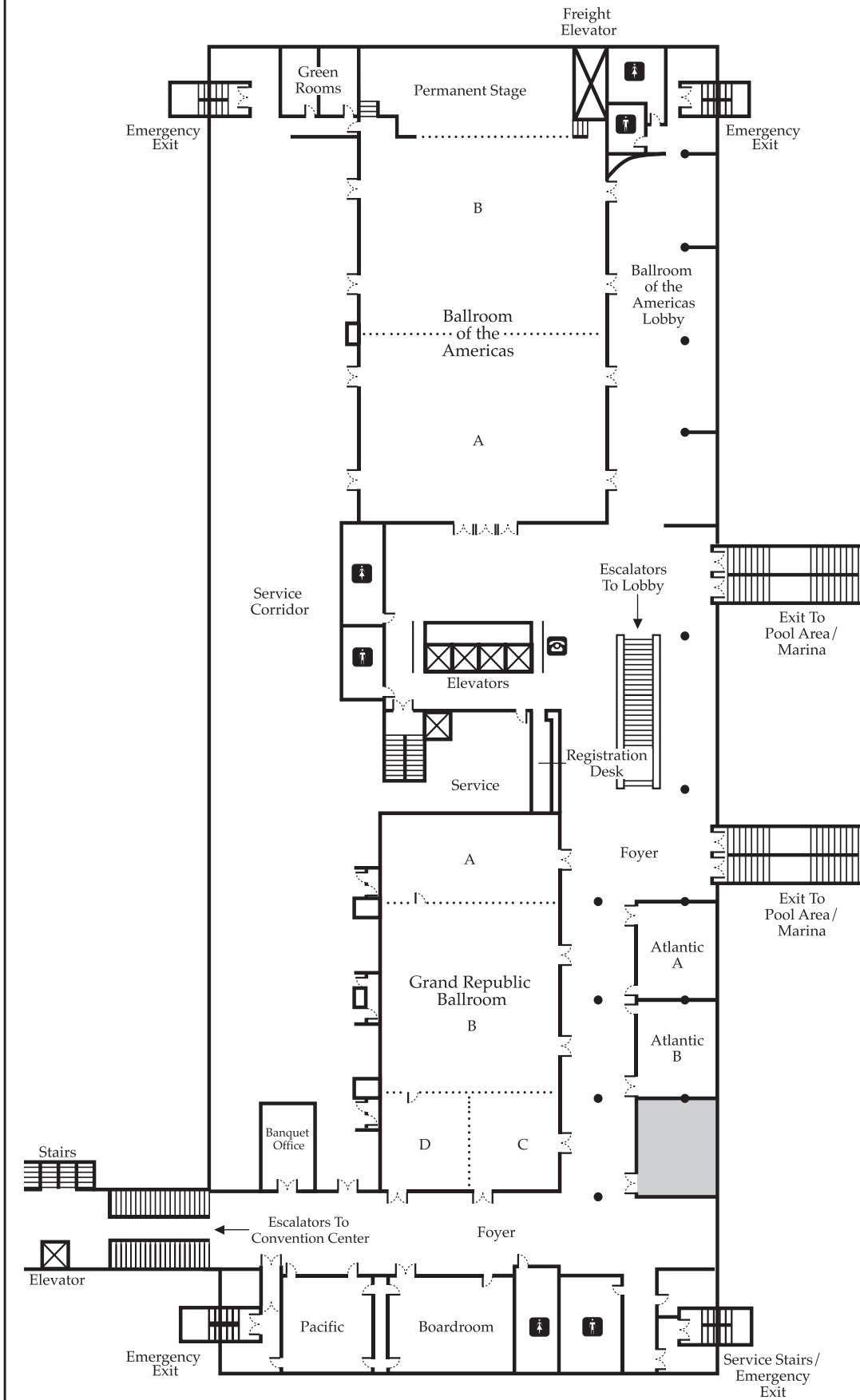
DISNEY'S CONTEMPORARY RESORT – MAIN LEVEL



DISNEY'S CONTEMPORARY RESORT – MAIN LEVEL

Room Name	Square Feet	Width	Length	Ceiling Height	Entrance Width	Entrance Height	Theater	School Room	Conference	U-shape	Banquet Rounds	Reception
Fantasia Ballroom	42,336	294	144	26	•	•	4,050	2,280	•	•	3,120	4,720
Fantasia G, H, J (each)	10,488	152	69	26	15	8	1,090	580	120	120	720	1,100
Fantasia G w/Salons A-F	17,176	113	152	26	6'5"	8	1,480	970	150	150	1,020	1,900
Fantasia G w/Corridor	•	•	•	•	15	8	1,090	610	•	100	720	1,100
Fantasia J w/Salons K-Q	17,176	113	152	26	6'5"	8	1,480	970	150	150	1,020	1,900
Fantasia J w/Corridor	•	•	•	•	15	8	1,090	610	•	100	720	1,100
Fantasia A-F, K-Q (each)	816	24	34	20	6'5"	8	65	45	20	25	50	86
Sorcerer's Apprentice Ballroom	7,068	114	62	20	•	•	734	413	•	140	500	744
Sorcerer's Apprentice 1	2,294	37	62	20	6'5"	8	238	124	52	54	120	240
Sorcerer's Apprentice 2	2,480	40	62	20	6'5"	8	250	134	52	54	180	260
Sorcerer's Apprentice 3	2,294	37	62	20	6'5"	8	238	124	52	54	180	240
Pastoral 1	644	23	28	14	3	8	60	36	20	24	50	50
Pastoral 2	667	23	29	14	3	8	60	36	20	24	50	50
Pastoral 3	644	23	28	14	3	8	60	36	20	24	50	50
Olympus A & B	1,032	43	24	12	•	•	80	48	30	30	80	80
Olympus A	504	21	24	12	3	8	40	24	14	15	40	40
Olympus B	504	21	24	12	3	8	40	24	14	15	40	40
Planner's Office	352	16	22	12	•	•	20	15	8	6	10	20
Fantasia Lobby	9,009	•	•	•	•	•	•	•	•	•	•	550
West Rotunda	•	•	•	•	•	•	•	•	•	•	•	252
Sorcerer's Apprentice Lobby	3,344	•	•	•	•	•	•	•	•	•	•	352
Pastoral Lobby	3,492	24	145	24	•	•	•	•	•	•	•	210
Outdoor Areas												
Porte Cochère	•	•	•	•	•	•	•	•	•	•	400	700
Sorcerer's Apprentice Courtyard	•	•	•	•	•	•	•	•	•	•	30	75
Marina	•	•	•	•	•	•	•	•	•	•	150	250
South Beach	•	•	•	•	•	•	•	•	•	•	400	800

DISNEY'S CONTEMPORARY RESORT – SECOND LEVEL



DISNEY'S CONTEMPORARY RESORT – SECOND LEVEL

Room Name	Square Feet	Width	Length	Ceiling Height	Entrance Width	Entrance Height	Theater	School Room	Conference	U-shape	Banquet Rounds	Reception
Ballroom of the Americas	11,968	88	136	15	6	7'9"	1,250	680	130	•	780	1,250
Americas A	5,808	88	66	15	5'8"	7'9"	600	330	70	70	400	600
Americas B	6,160	88	70	15	5'8"	7'9"	640	350	70	70	440	650
Permanent Stage*	1,166	40	29	21	•	•	•	•	•	•	•	•
Grand Republic Ballroom	8,710	65	134	9	•	•	950	480	•	150	620	800
Grand Republic A	2,275	65	35	9	6	6'10"	196	120	50	51	100	190
Grand Republic B	4,290	65	66	15	6	6'10"	460	260	59	65	300	450
Grand Republic C	1,024	32	32	9	6	6'10"	80	30	18	25	50	100
Grand Republic D	1,024	32	32	9	6	6'10"	80	36	18	25	50	100
Grand Republic C & D	2,080	65	32	9	6	6'10"	170	120	52	58	100	200
Atlantic A	945	35	27	9	6	6'10"	50	30	20	20	40	60
Atlantic B	945	35	27	9	6	6'10"	50	30	20	20	40	60
Pacific	713	25	32	9	3	6'10"	60	27	20	20	50	50
Boardroom	1,344	42	32	9	6'8"	6'10"	•	•	24	•	•	24
Ballroom of the Americas Lobby	4,216	34	124	8	•	•	•	•	•	•	•	290

*Permanent Stage is part of Ballroom of the Americas B and is included in the total square foot area.