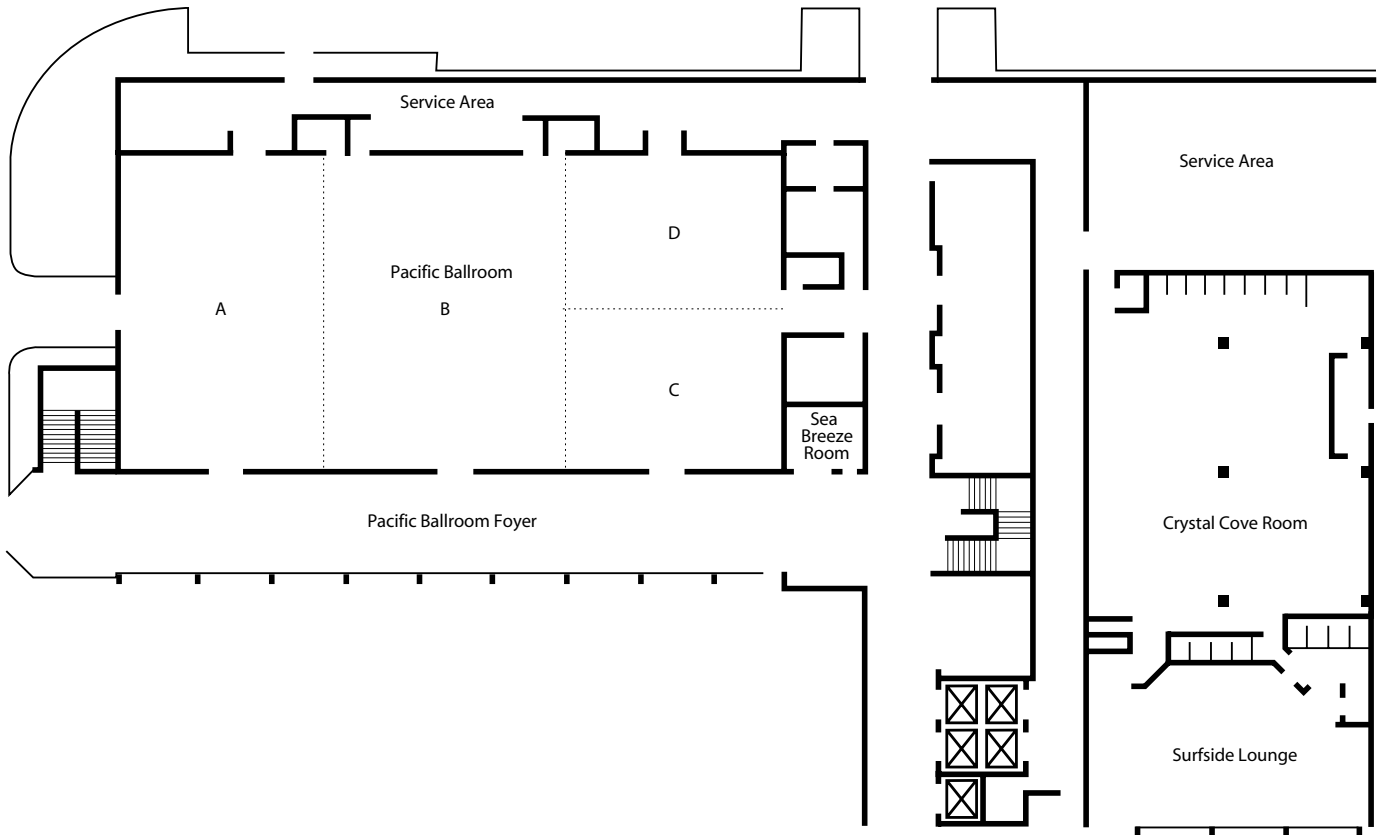


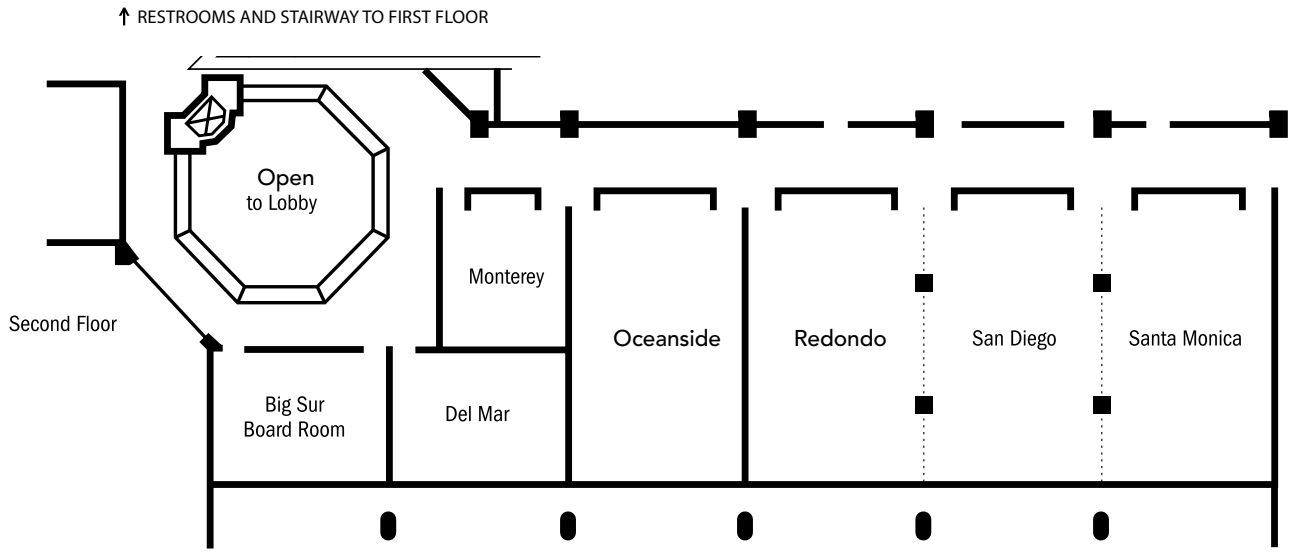
DISNEY'S PARADISE PIER® HOTEL — PACIFIC BALLROOM



Room Name	Square Feet	Width	Length	Ceiling Height	Theater Style	School Room	U-Shape	Conference	Banquet Rounds	Reception	Exhibit 8'x10'	Exhibit 10'x10'
Pacific Ballroom	7,250	58	125	13'4"	700	540	•	•	600	775	59	46
Pacific Ballroom Foyer	•	17'9"	115	10'	•	•	•	•	•	•	•	•
Ballroom A	2,320	58	40	13'4"	230	160	46	36	190	330	15	12
Ballroom B	2,436	58	42	13'4"	230	160	46	36	190	330	15	12
Ballroom C	1,247	29	43	13'4"	120	80	24	36	80	165	7	6
Ballroom D	1,247	29	43	13'4"	120	80	24	20	80	165	7	6
Ballrooms A & B	4,756	58	82	13'4"	460	320	•	•	400	680	29	23
Ballrooms B, C & D	4,930	58	85	13'4"	460	320	•	•	400	680	29	23
Ballrooms C & D	2,494	58	43	13'4"	230	160	46	36	200	330	15	12
Crystal Cove Room	3,021	53	57	8'3"	300	160	40	30	230	300	15	11
Sea Breeze Room	98	7	14	10'	•	•	•	•	•	•	•	•

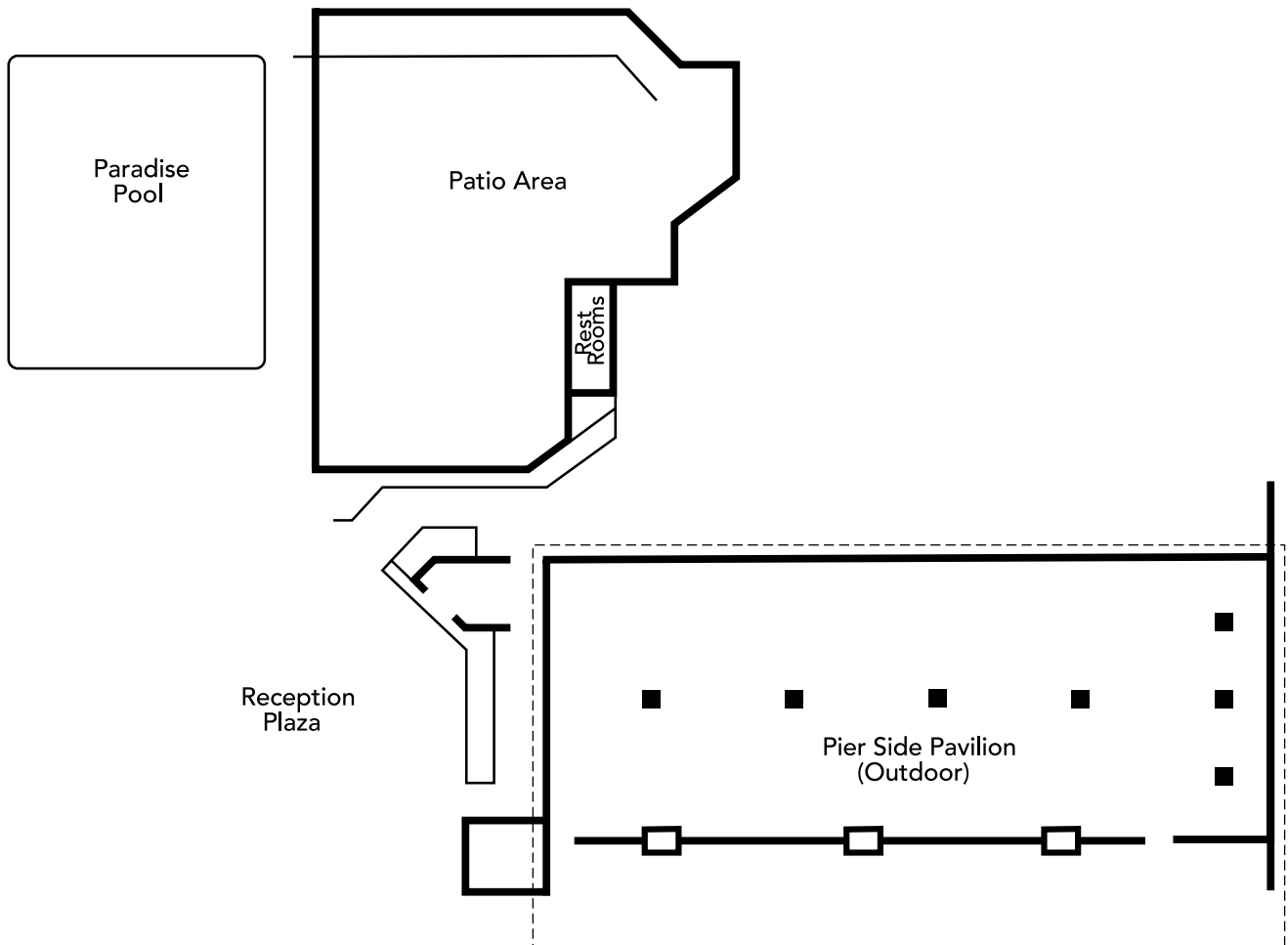
Listed capacities do not include audio visual or other additional equipment.

DISNEY'S PARADISE PIER® HOTEL — SECOND FLOOR



Room Name	Square Feet	Width	Length	Ceiling Height	Theater Style	School Room	U-Shape	Conference	Banquet Rounds	Reception	Exhibit 8'x10'	Exhibit 10'x10'
Big Sur Board Room	550	20	27	7'5"	•	•	•	12	•	•	•	•
Del Mar	550	20	27'6"	7'5"	48	25	20	18	30	40	2	2
Monterey	342	19	18	7'5"	25	15	14	10	20	30	2	2
Oceanside	1,161	27	43	8'3"	120	63	38	34	70	110	6	3
Redondo	1,161	27	43	8'3"	120	63	38	34	70	110	6	3
San Diego	1,161	27	43	8'3"	120	63	38	34	70	110	6	3
Santa Monica	1,161	27	43	8'3"	120	63	38	34	70	110	6	3

DISNEY'S PARADISE PIER® HOTEL — PIER SIDE PAVILION



Room Name	Square Feet	Width	Length	Ceiling Height	Theater Style	School Room	U-Shape	Conference	Banquet Rounds	Reception	Exhibit 8'x10'	Exhibit 10'x10'
Pier Side Pavilion	4,000	38'9"	100	7'8"	400	•	•	•	280	425	•	•
Patio Area	3,224	62	52	•	•	•	•	•	150	250	•	•